

Highlands

Home to the new royalty



Progress Report 2014

Design & Construction Management



Promoted by



YEAR 2014 HIGHLANDS AT A GLANCE...



Highlands, which is tucked away from the noise and pollution of the city, is coming up on 30 acres of land in Mysore overlooking the vast airport premises and the majestic Chamundi Hills. Its location is perfect in terms of connectivity and proximity to hospitals, educational institutions, transport hubs, commercial establishments, places of worships, public parks and lakes.

Highlands
Home to the new royalty
Progress Report 2014



Promoted by

ESVEE
group
WE MAKE DREAMS COME TRUE

ISHYA
HOSPITALITY • REALTY

YEAR 2014 HIGHLANDS AT A GLANCE...



Highlands
Home to the new royalty
Progress Report 2014



Promoted by

ESVEE
group
WE MAKE DREAMS COME TRUE

ISHYA
HOSPITALITY • REALTY

YEAR 2014 HIGHLANDS AT A GLANCE...



Highlands – home to the new royalty! True to its tagline, Highlands is being built to exacting standards under the supervision of domain experts to create an abode for the discerning few. Here, we would like to share with you glimpses of our journey since we began a couple of years ago.



Promoted by

YEAR 2014 HIGHLANDS AT A GLANCE...



Highlands
Home to the new royalty
Progress Report 2014



Promoted by

ESVEE
group
WE MAKE DREAMS COME TRUE

ISHYA
HOSPITALITY • REALTY

YEAR 2014 HIGHLANDS AT A GLANCE...



Highlands has obtained all the statutory approvals from related agencies. The infrastructure being developed at Highlands matches international standards. It exceeds the requirements of local statutory agencies such as MUDA, Jn-NURM, KSPCB and NBC. Highlands is in a league of its own where innovation and benchmark specifications are concerned.



YEAR 2014 HIGHLANDS AT A GLANCE...



Highlands
Home to the new royalty
Progress Report 2014



Promoted by

ESVEE
group
WE MAKE DREAMS COME TRUE

ISHYA
HOSPITALITY • REALTY

What's New at Highlands



Highlands has now initiated works on phase – II development of the township. All those activities which ensure completion of the project are being carried out at a brisk pace.



Promoted by

What's New at Highlands



Promoted by

What's New at Highlands



Highlands, through phase – I, has already demonstrated its intention to deliver a premium township and commitment to quality by showcasing all the constituent works in its “completed form”. Highlands shall strive to maintain the same level of standards for the works that are being carried out now under phase - II



What's New at Highlands



Highlands
Home to the new royalty
Progress Report 2014



Promoted by

ESVEE
group
WE MAKE DREAMS COME TRUE

ISHYA
HOSPITALITY • REALTY

PROPOSED EAST FACING VILLA DESIGN BY ISHYA PROPERTIES



Ground Floor

PLAN - east apartments



First Floor

PLAN - east apartments



Highlands proposes to build duplex villas in the built up area range of 1500 Sft for 2-BHK and 1800 Sft for 3-BHK. These villas are designed by DNA Barcelona, and shall conform to the best of international design standards while also complying with Traditional Vasthu guidelines.



Promoted by

PROPOSED WEST FACING VILLA DESIGN BY ISHYA PROPERTIES



Ground Floor

PLAN - west apartments



First Floor

PLAN - west apartments



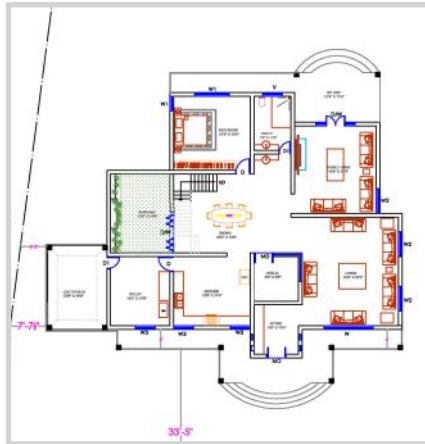
Highlands proposes to build duplex villas in the built up area range of 1500 Sft for 2-BHK and 1800 Sft for 3-BHK. These villas are designed by DNA Barcelona, and shall conform to the best of international design standards while also complying with Traditional Vasthu guidelines.



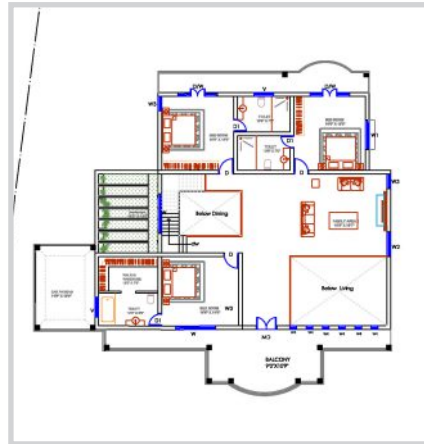
Promoted by

VILLA UNDER CONSTRUCTION BY ISHYA PROPERTIES

Ground Floor Plan



First Floor Plan



The villa construction work belonging to one of the proud owners of Highlands has just begun. This 4-bedroom spacious villa is expected to be ready for occupation by December 2015. Many more such villa constructions are expected to commence over the next 6 months.

